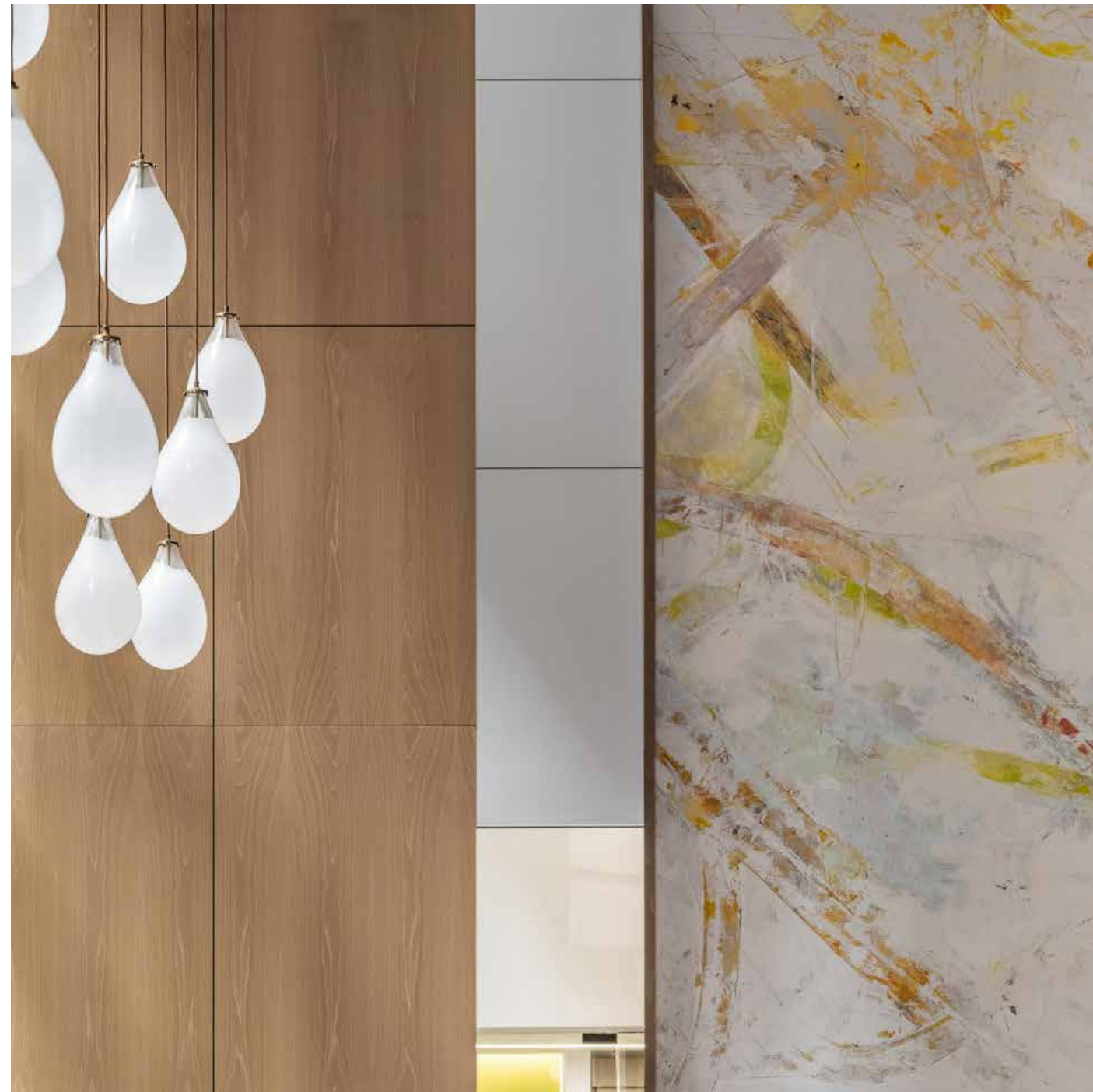




# DESTINATION MEETS DESIGN

LIFESTYLE ■ HOSPITALITY



## WHO WE ARE

Our Hospitality Studios deliver elevated design with the focus and responsiveness of a boutique firm. We operate within Stantec's broader network of global offices and multi-disciplined teams, and with these unique resources, we are able to bring the best talent to our clients' projects across the globe.



## WHAT WE DO

From boutique properties to national flags and unique resort destinations, we look at what will enhance the guest experience and the owner's investment. We look beyond the defined limits of a project to consider the historical, social, cultural, and physical context, working closely with a wide range of stakeholders, from immediate users to the entire community.



## OUR PHILOSOPHY

Our design philosophy is guided by five parameters of design: Vision; Responsive Design; Innovation; Performance; and Craft. We also believe great design is the end product of a collaborative process where clients share their needs, ideas and ideals, thus cultivating creative responses to our clients' aspirations.

**MISCELA** Somerville, MA Scope: Architecture, interior design, branding

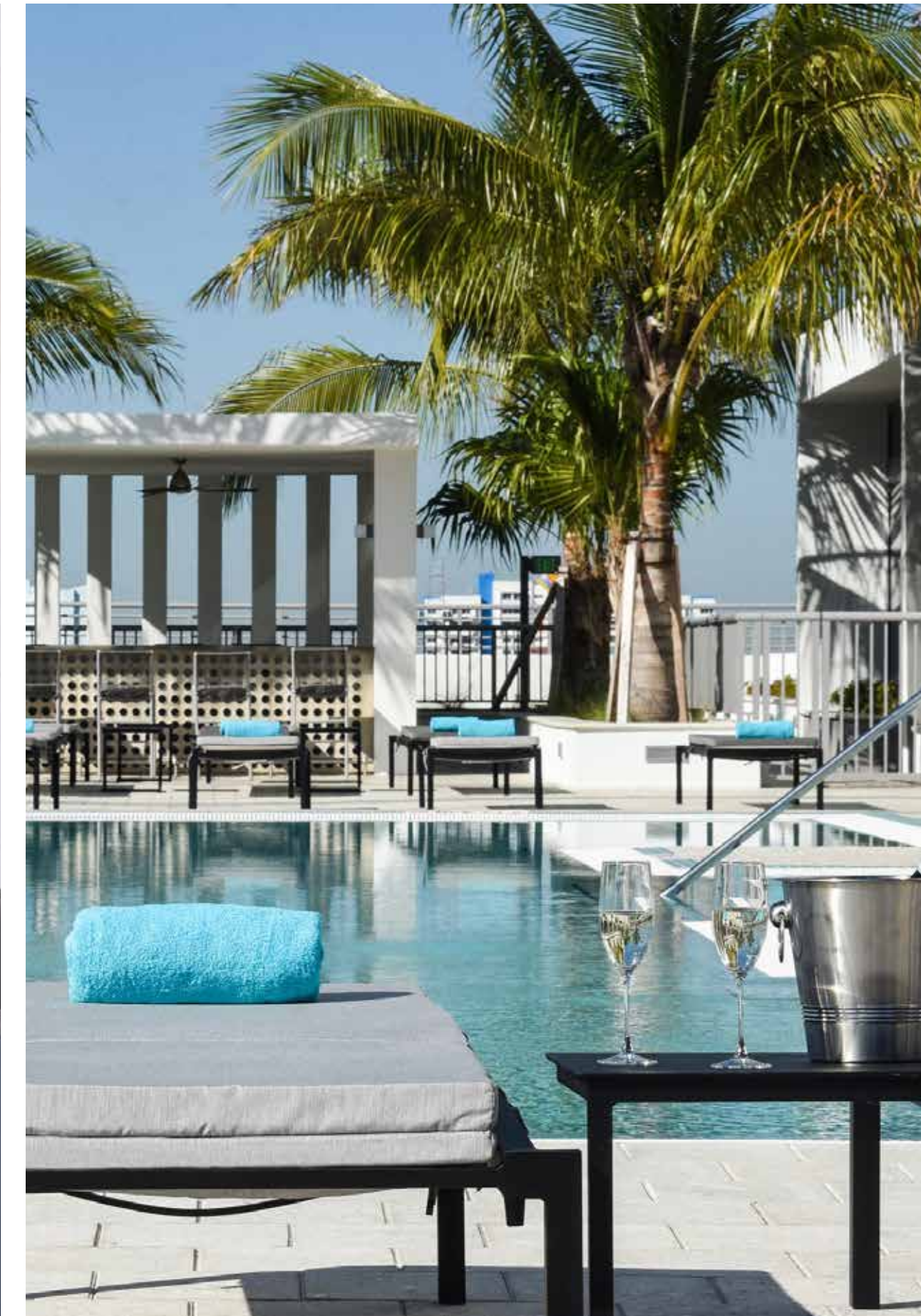


**EVE AT THE DISTRICT**

*Miami, FL*

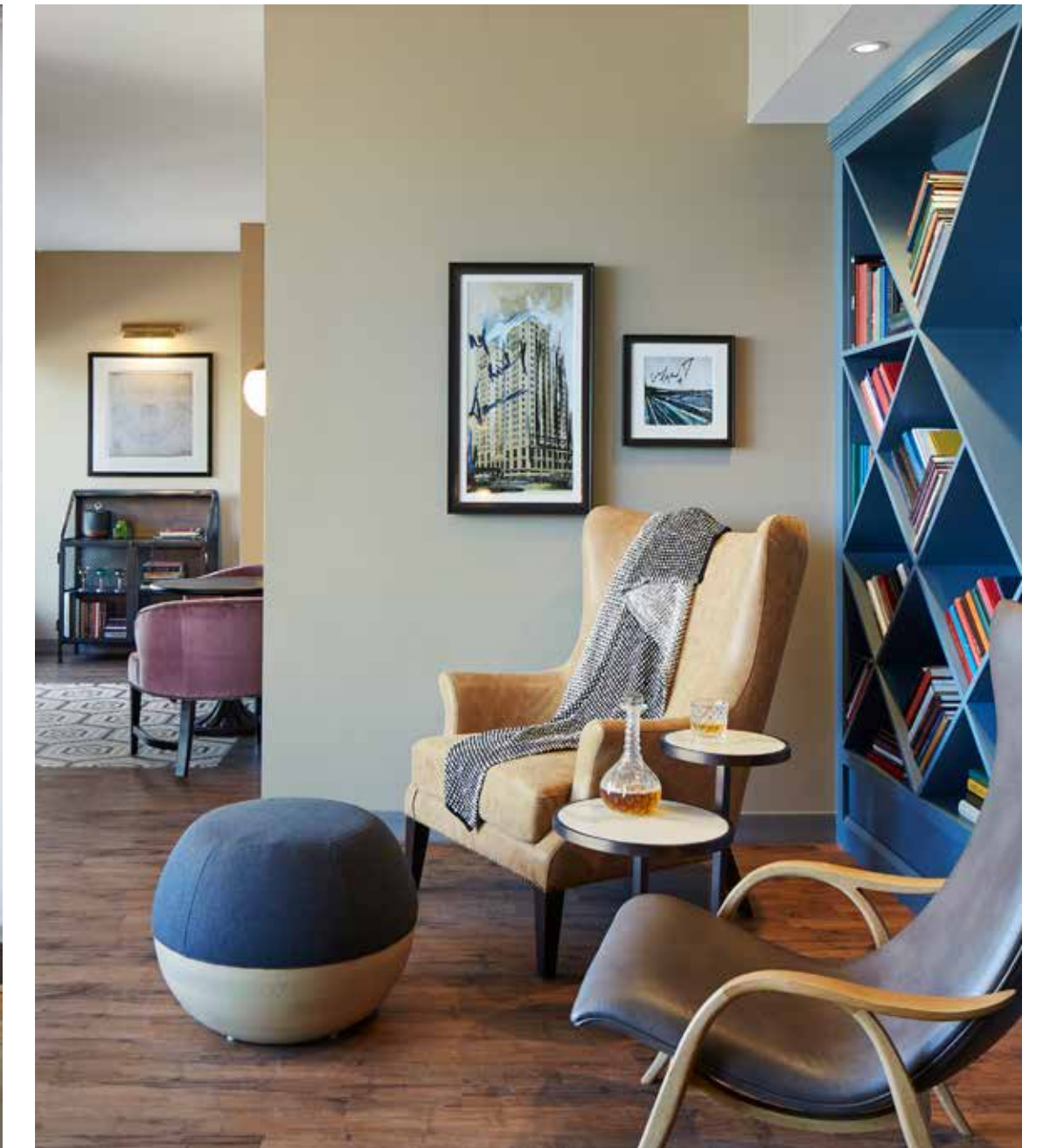
*Scope: Architecture, interior design*

Named after “Eve”, an art piece of a mysterious woman by artist Anna Sweet, Eve at the District is a 19-story mixed-use tower including luxury residences, retail and restaurant space.



**EVE AT THE DISTRICT**  
*Miami, FL*





**HOTEL ZACHARY**

*Chicago, IL*

*Scope: Architecture, interior design guestrooms & suites, lighting design*

Hotel Zachary enlivens the storied Wrigley Field experience, its design honoring the ballpark's world-renowned 1914 architect Zachary Taylor Davis. Wood paneling, thoughtful details, and comfortable, luxurious interiors complement the elegant glass exterior. Hotel Zachary is the perfect destination for baseball fans, business and leisure guests, and Chicago residents.



**HOTEL ZACHARY**  
*Chicago, IL*



## **260 FRANKLIN STREET**

*Boston, MA*

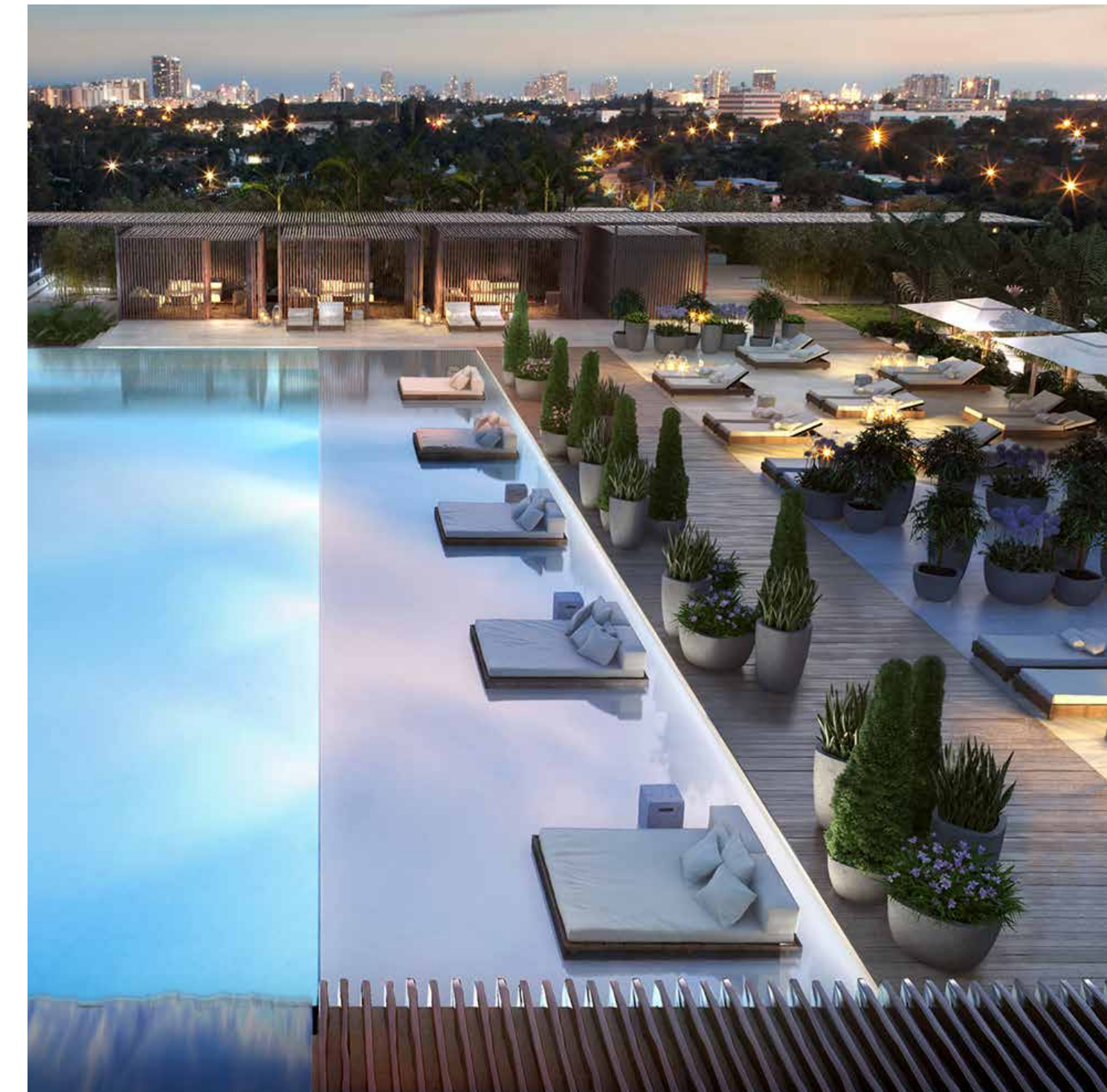
*Scope: Architecture, interior design,  
landscape architecture*

The design concept for this lobby interior was inspired by the process of winter transitioning into spring. The overall aesthetic is a clean, sleek look with neutral white and grayscale colors for the floor, walls and ceiling, representing winter. Splashes of color, representing the emerging spring, are introduced through furniture and fabrics, carpets, artwork, wood accents, and interior landscaping.





*In collaboration with Lissoni & Partners*

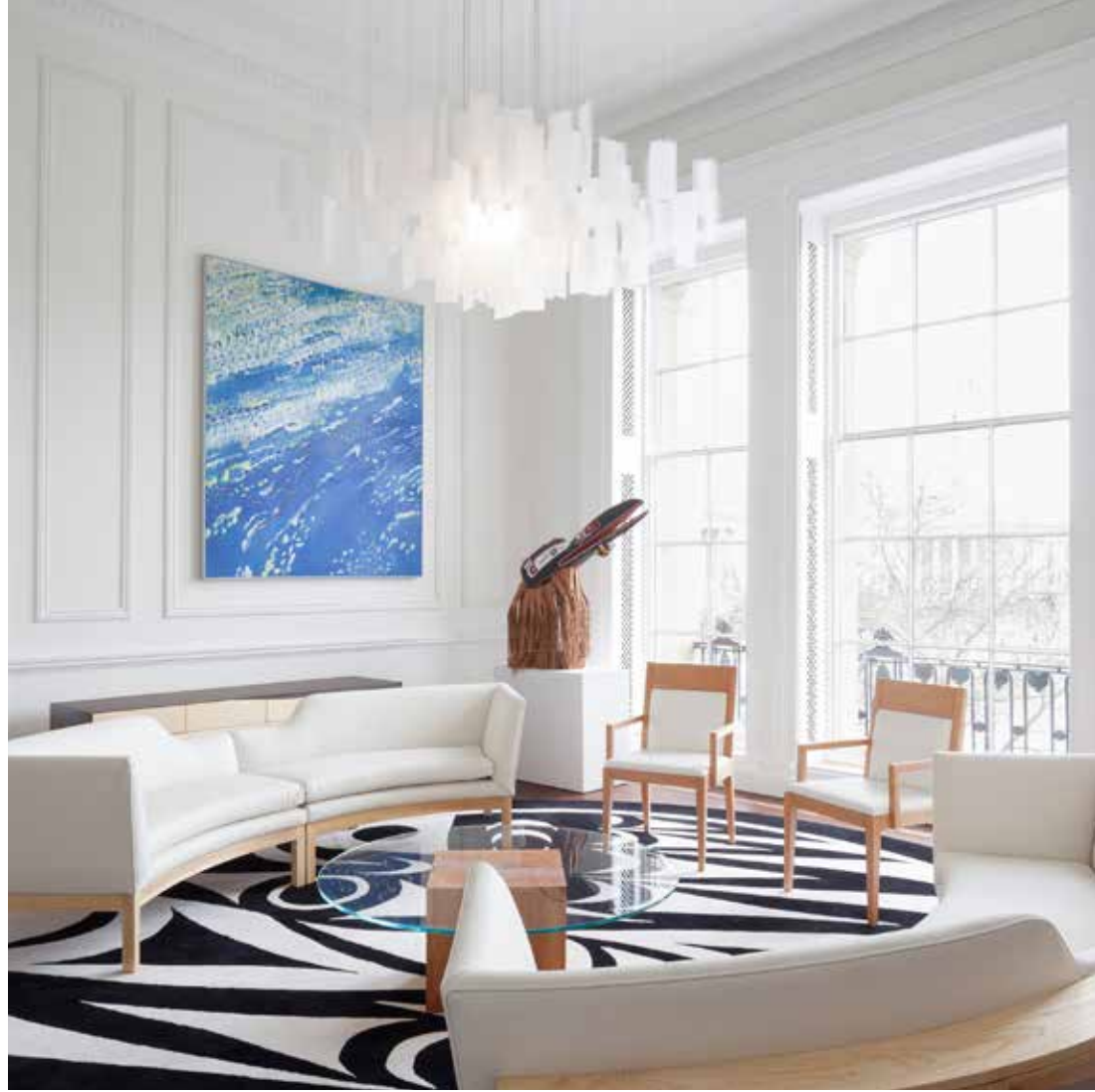


**RITZ CARLTON RESIDENCES**

*Miami, FL*

*Scope: Architecture*

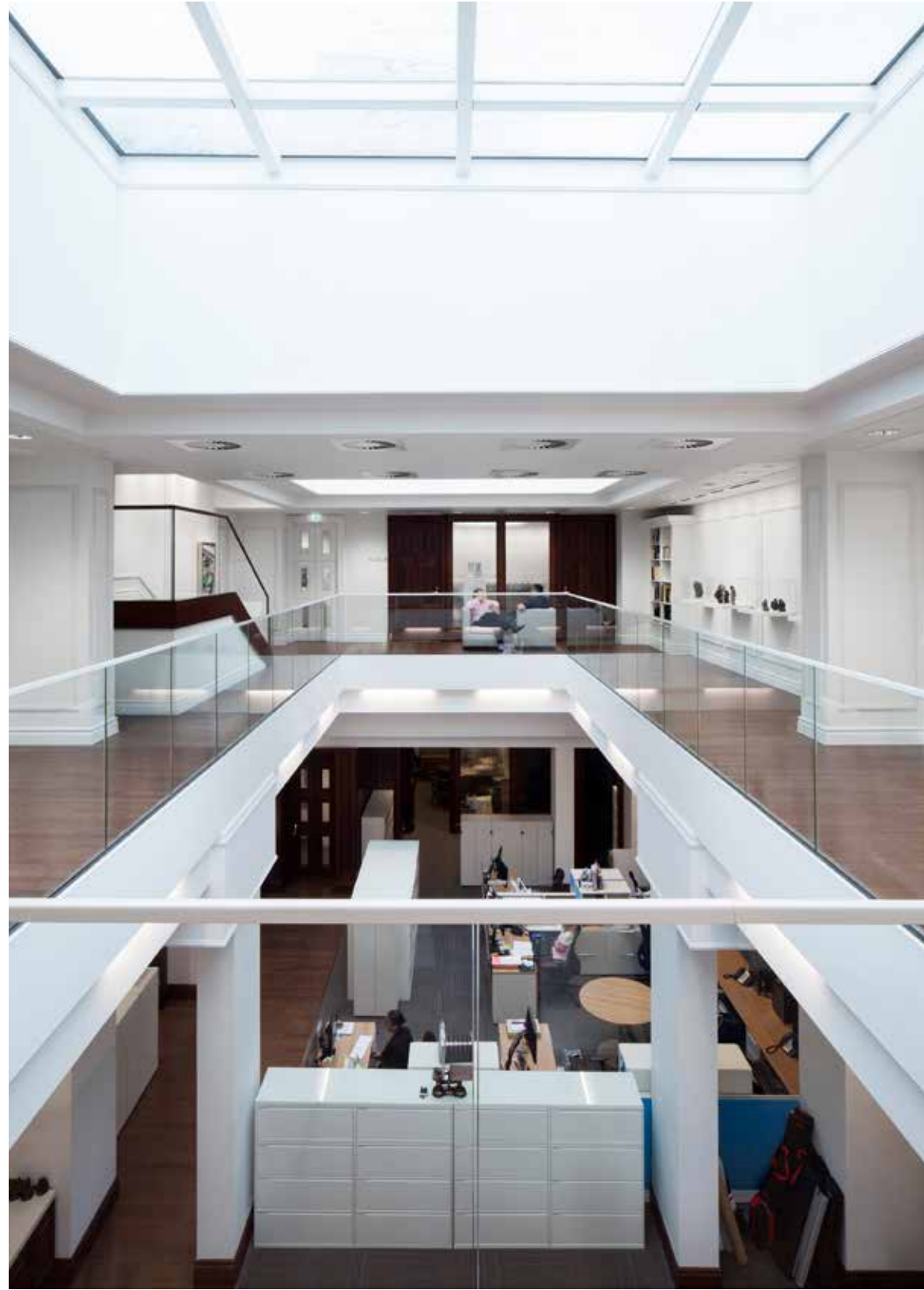
Once a popular destination hotel in the 1920s, then a military hospital during World War II, The Ritz Carlton Residences is the largest adaptive reuse project in South Florida. This project is a true measure of resilience and showcases the value of the collaborative design team of Stantec and Lissoni Associati from Milan.



**CANADA HOUSE**

London, UK

Scope: Architecture, interior design



**CANADA HOUSE**  
*London, UK*

**SAN JUAN HOTEL**

*Miami, FL*

*Scope: Architecture, interior design*

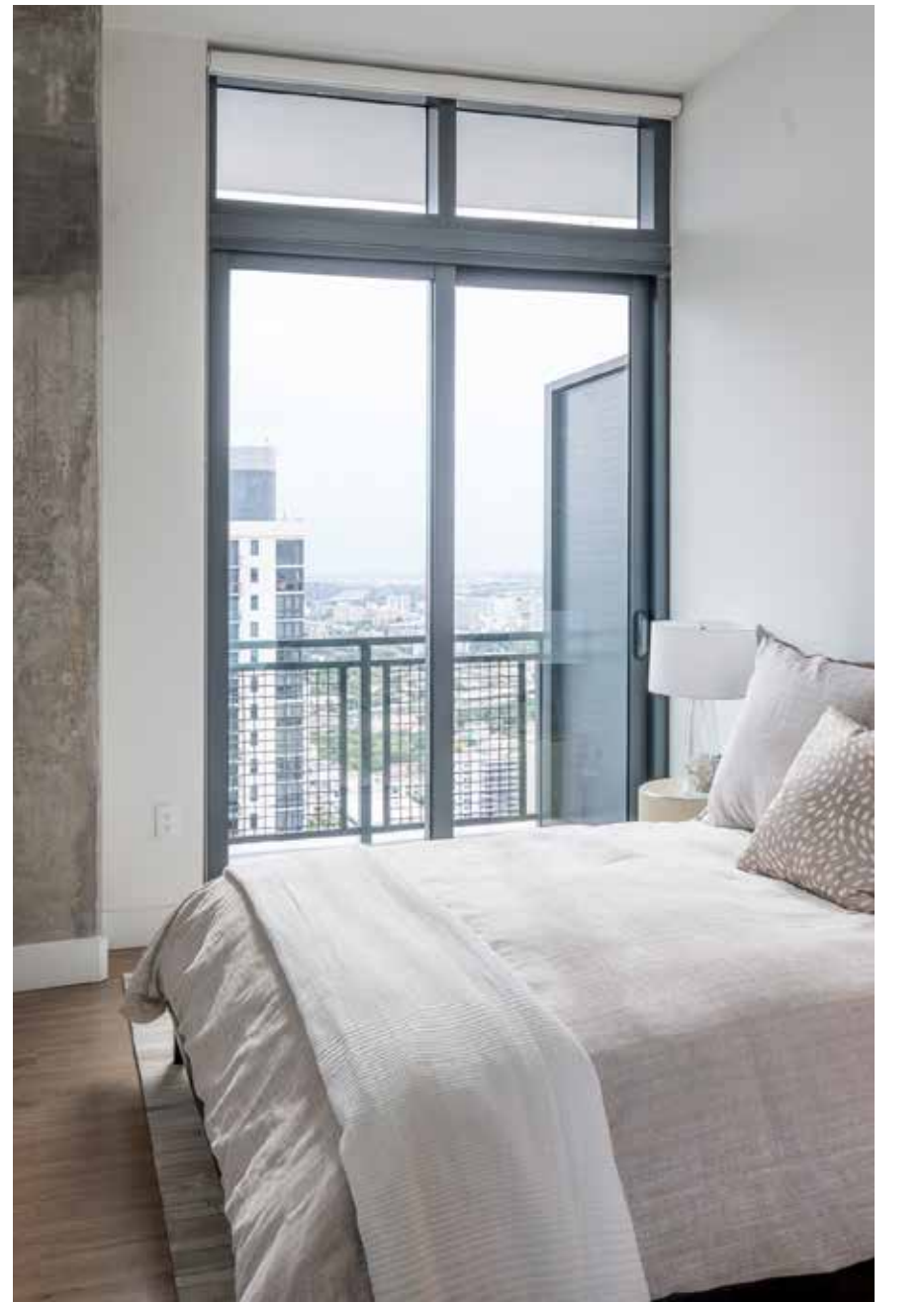
The inspiration for the San Juan hotel's renovation stems from the building's original classic post-war modern style. Warm woods with brass details, luxurious marble, and touches of navy and burlap convey nautical influences reminiscent of Old San Juan, Puerto Rico.





**BEZEL AT MIAMI WORLD CENTER**  
*Miami, FL*  
*Scope: Architecture, interior design,*  
*buildings engineering, sustainability*  
*building performance*

Part of the mixed-use Miami World Center, Bezel, the development's high-end, residential tower, redefine the downtown skyline. Our team merged urban elements with dramatic and bold design to create a stylish, inviting place to call home.



**BEZEL AT MIAMI WORLD CENTER**  
*Miami, FL*



**DENVER MARRIOTT**

*Denver, CO*

*Scope: Architecture,  
interior design, lighting  
design, buildings  
engineering*

## **VIRGIN HOTEL**

*New York, NY*

*Scope: Architecture (Stantec), interior design (by Mark Zeff & Stantec)*

Located on a previously neglected area of the NoMad neighborhood, The Virgin Hotel New York is a mixed-use development featuring luxurious rooms & suites, and several F&B amenities including indoor-outdoor terraces and balconies where guests and neighborhood residents fully immerse themselves in New York City's skyline in the heart of Manhattan. Multiple large retail tenants and curated food and beverage spaces sit at the base of the hotel bringing vitality to the area, and dramatically enlivening Broadway.





**VIRGIN HOTEL**  
New York, NY



**HYATT CENTRIC**

*Chicago, IL*

*Scope: Architecture, interior design,  
buildings engineering*

This renovation and adaptive reuse of a vintage, 22-story office building now provides four-star luxury for the business traveler and vacationing families, including an upscale restaurant, meeting and event spaces, and an outdoor rooftop bar and lounge.



**THE RALLY HOTEL AT  
MCGREGOR SQUARE**

*Denver, CO*

*SCOPE: Architecture; hotel rooms  
interior design; lighting design for  
the public areas.*

The Rally Hotel is a boutique gem in the heart of McGregor Square, just minutes from the Colorado Rockies' Coors Field. Stantec provided interior design services for the hotel rooms, evoking a sense of fun and comfort. Our lighting designs for the public areas thoughtfully complement the ambiance of each space, from bold and playful, to elegant and refined.





**MCGREGOR SQUARE**  
*Denver, CO*



**HYATT REGENCY  
SCHAUMBURG**

*Chicago, IL*

*Scope: Architecture,  
interior design*

The hotel, originally designed in 1979, featured an atrium and open-plan concept. Our team redesigned the space to better integrate the lobby, lounge and restaurant experiences. We also installed a “floating” glass and steel cube feature to provide a much needed sense of intimacy within the large volume of the atrium.

## **MONARCH**

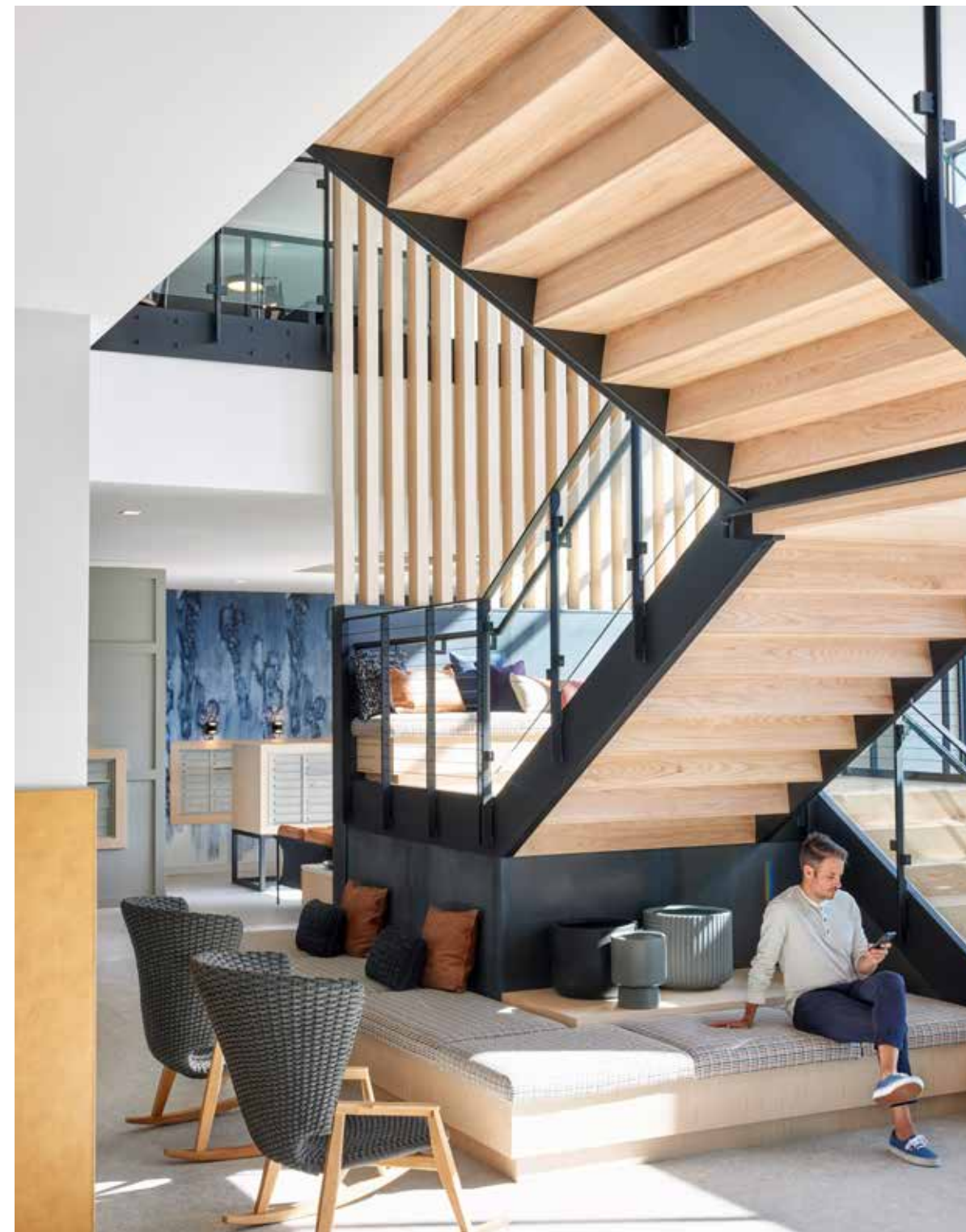
*Gambrills, MD*

*Scope: Branding, interior design*

Monarch sets the tone for a new suburban lifestyle by addressing the importance of balance in residents' lives. Our branding and interior design teams harnessed the best-of-both-worlds lifestyle by blurring boundaries between indoor vs outdoor, activity vs serenity, and old vs new.



**EMBLEM 120** Woburn, MA Scope: Interior design, branding





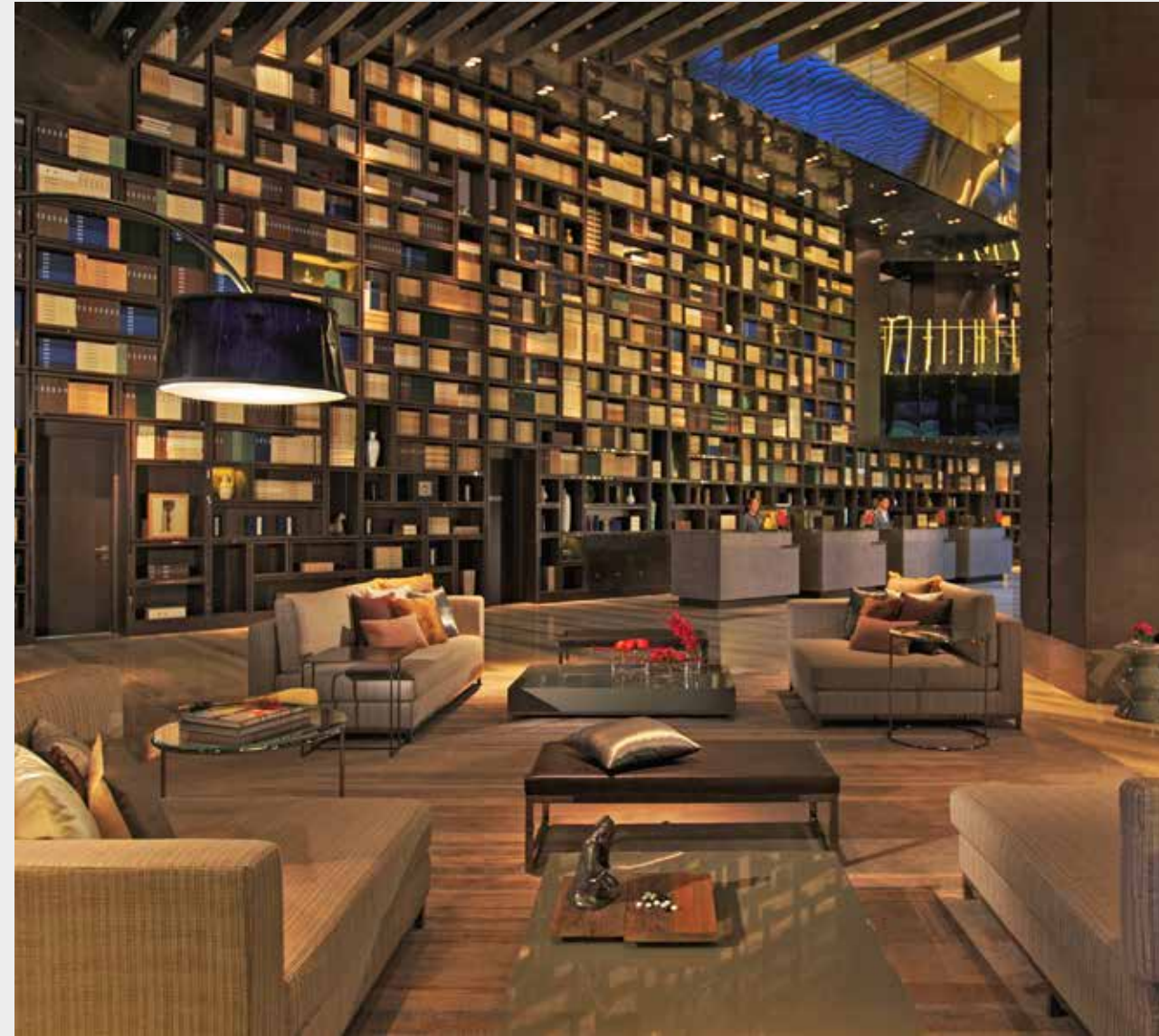
**BEIJING WANGFUJING  
RENAISSANCE MARRIOTT**

*Beijing, China*

*Scope: Interior design*

Our team completed extensive renovations including the lobby, Chinese and Japanese restaurants, guestrooms, spa, and “sky bar” featuring a glass floor and exterior pools. The relaxed and sophisticated design features rich wood finishes, stunning floor to ceiling bookcases, dynamic lighting, and a vibrant color palette.





**BEIJING WANGFUJING  
RENAISSANCE MARRIOTT**  
*Beijing, China*



**DRIFTWOOD**

*Bay Harbor Islands, FL  
Scope: Architecture, interior  
design, buildings engineering  
(SMEFPF)*

Our team provided integrated services for these unique, luxury waterfront condominiums within the growing island community. Drawing inspiration from the geography of the islands and the geometry of natural erosion, the design embodies the contrast between the built and natural environments.



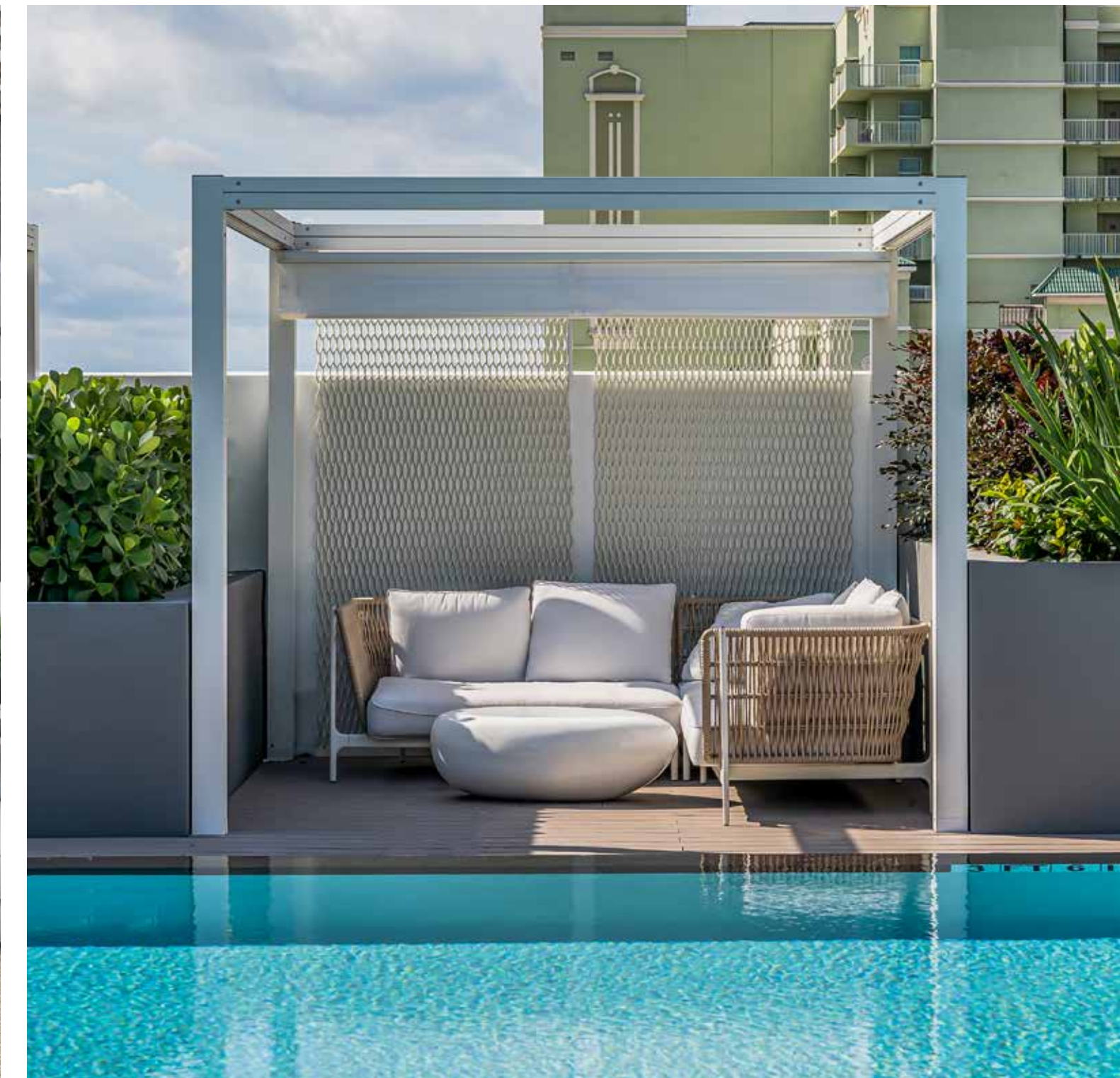
## **ARBUTUS SHOPPE**

*Vancouver, BC*

*Scope: Interior design*

Our redesign introduces a more modern and minimalist quality to the once over-merchandised Shoppe. Translucent art on glass allows natural light to filter into the space to create an airier and more open feel. The lighting design adds vibrancy, with zones of sparkle as a counterpoint to the calming minimalism.

**LAS OLAS WALK** Miami, FL *Scope: Interior design*

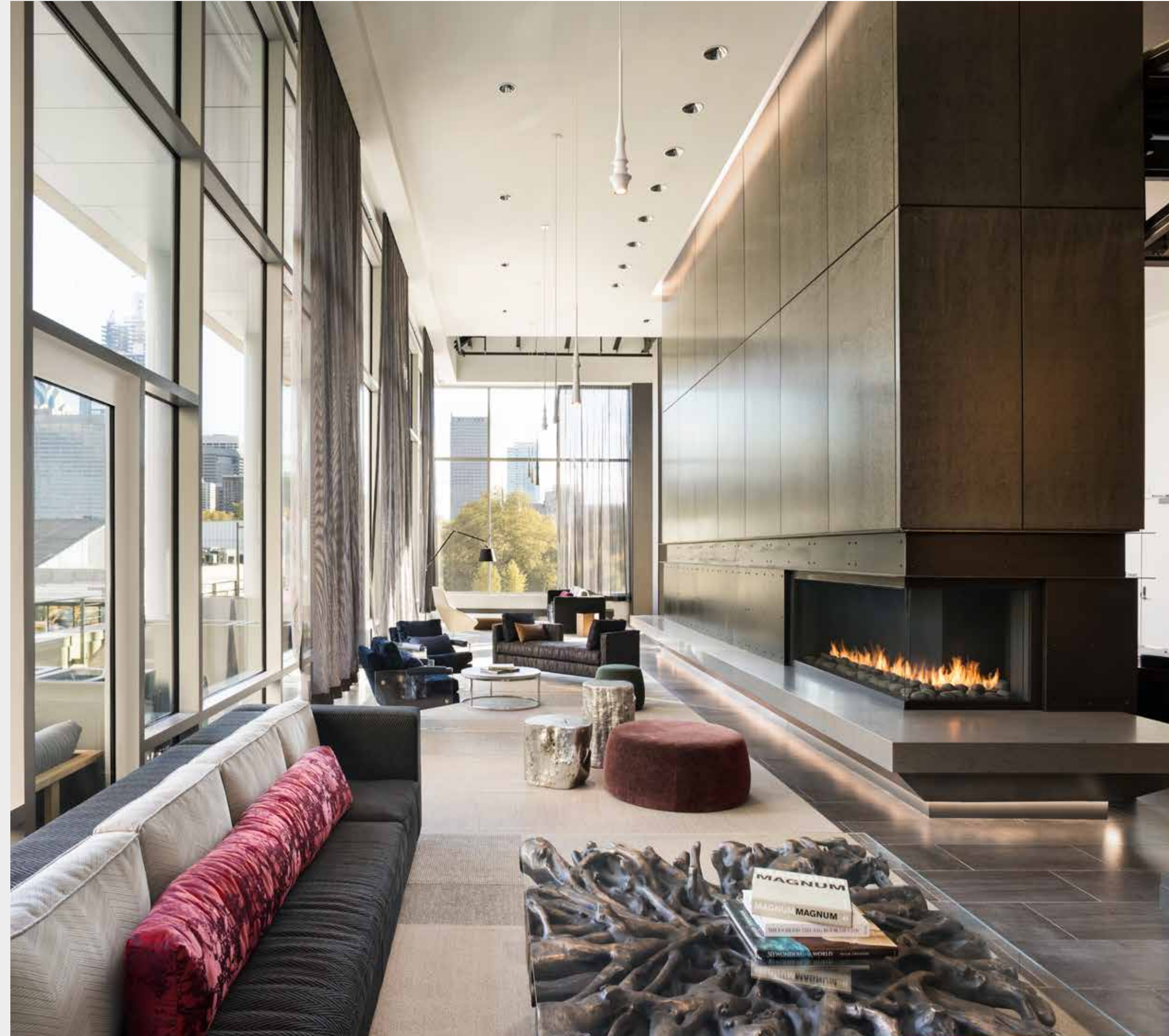


## **DALIAN ON THE PARK**

*Philadelphia, PA*

*Scope: Interior design, branding*

Located in Philadelphia's burgeoning Art Museum neighborhood, Stantec's design of the amenity space at Dalian on the Park draws inspiration from the city's rich history as well as its thriving art district. The high-end amenities – 2-story fireplace lounge, demonstration kitchen, fitness center and outdoor entertaining area – bring a new level of luxury to this evolving neighborhood.



**KIMPTON KAWANA BAY**

*Grenada*

*SCOPE: Architecture, interior design, structural engineering, landscape architecture*

Our team is providing integrated design services for this new 5-star boutique resort located at the end of Grande Anse Beach. Our design evokes Kimpton's iconic, contemporary style influenced by the culture of Grenada, and luxurious guest rooms offer a handcrafted, organic approach to the guest experience.



**KIMPTON KAWANA BAY**

*Grenada*



**THE GALE HOTEL**  
*Miami, FL*  
*Scope: Architecture,*  
*interior design*







**SOFITEL THE PALM**

*Dubai*

*SCOPE: Interior design*

Our team was asked to create an interior design solution for Sofitel Dubai–The Palm Resort & Spa, a unique luxury 5-star resort on Dubai’s Palm Jumeirah Island. The Polynesian island theme incorporates vertical gardens and artworks bringing elegance to luminous interiors. The SoSpa includes treatment rooms, therapeutic pools, steam rooms and cabanas.



**ANJI HOTEL**

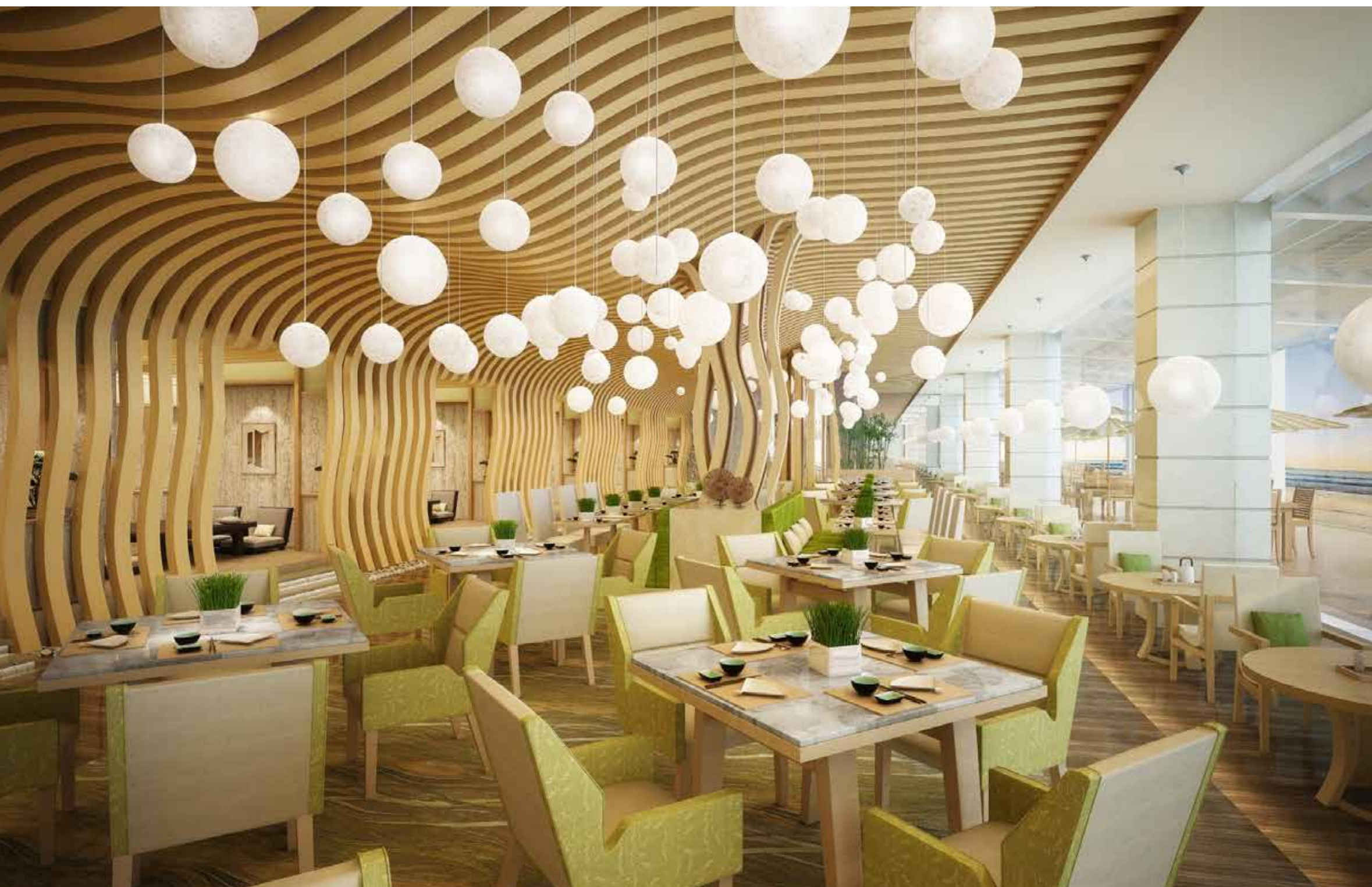
*Anji, China*

*SCOPE: Architecture,  
interior design*

The Anji Hotel is a unique 5-star hotel located in the scenic area of the Yangtze River, within a growing popular leisure resort destination. Amenities include upscale Chinese dining, lobby bar and tea room, banquet space, and luxury spa facilities.



**ANJI HOTEL**  
*Anji, China*



“IT IS THE NATURE OF HUMANKIND NOT  
ONLY TO USE SPACES, BUT TO FILL THEM  
WITH BEAUTY AND MEANING.”

INTERNATIONAL FEDERATION OF INTERIOR  
ARCHITECTS/DESIGNERS DECLARATION

---





---

**CONNECT WITH US**

**Duk Kim** AIA, LEED AP  
**Global Hospitality Leader**  
duk.kim@stantec.com  
(773) 710-2601